



2017

Company
Profile



www.trailanalytics.com

2017 | Company Profile

Contents

01 Executive
Summary

02 What
We Do

03 Our
Experience

04 Who is
on Our Team?



Executive Summary

Trail Analytics is a Software Development and Data Analysis company whose focus is on the development of comprehensive Data Management and Analysis Solutions

VISION

To provide intelligent and affordable software solutions.

MISSION

To harmonize business processes with technology to improve productivity, minimize risk and maximize profit.



What We Do

1. Application Development.

We analyze existing processes, use available data, stress test our results and develop systems designed to meet the client's need.

Examples include Credit Analyst and Issue Tracker

2. Application Integration.

We study our clients' existing systems, develop SQL queries to retrieve data from them, index the extracted data and provide reports tailored to our clients' needs.

Database Integration is commonly done with Oracle, MSSQL and MySQL databases

3. Application Penetration Testing.

We believe in testing systems to certify their worth. We therefore have custom and off-the-shelf tools which help us identify system vulnerabilities and ultimately, help us secure systems against unauthorized access

4. Information System Audits.

We analyze our clients' business operations, assess the suitability of their systems to their processes and provide guidance on what changes should be made to their systems to better address the needs of the business.

Exhaustive audit done for Changamka MicroInsurance, Kenya.



Products:

1. Credit Analyst

Credit Analyst is a Multi-User Application; supports multi-user simultaneous access on the same system.

This system facilitates the accurate capture of Customer Data (Account Level, Loan, Security, Guarantor, Fraud and Stakeholder Data that is, both Phase I and II Data), Institution Level, Bounced Cheque Data as well as provide extensive automation of the Credit Management Process.

Clients:



United Bank For Africa



Ecobank Uganda



Orient Bank Limited



KCB Bank Limited



Stanbic Bank Uganda



Uganda Finance Trust Bank Limited

2. Issue Tracker

Issue Tracker is a multi-user application designed to enable staff within a business log a range issues for resolution.

The issues range from faulty hardware to broken down machinery.

The system facilitates the systematic resolution of the issues by escalating non-resolved issues through a hierarchical chain of staff, starting with the key staff and ending with the department's head

Clients:



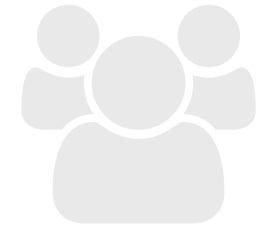
KCB Bank Limited



Our Experience

Our work in applications development puts us at the forefront of the fight against intrusion attacks.

Our tools and expertise continue to excel in the fields of intrusion detection and penetration testing. As a result, both our custom developed and our clients' off-the-shelf systems are effectively secured against unauthorized access.



Who's on Our team?

The team is comprised of 6 onsite employees, 3 on call consultants and an active network of industry/ technical experts who are called upon in specific circumstances.



Samuel Otim.

Managing Director

Samuel uses his project management and software development expertise to bridge the gap between business and technology. When an opportunity has been identified, Samuel will rally the team and co-ordinate the development of technological solutions to satisfy the customers.



Paul Ekudu

Head Development Manager

Paul drives the Business Development unit using his vast knowledge and experiences from his time with entities such as Clinton Health Access Initiative, Goldman Sachs and KPMG. Paul mainly focuses on the identification of business opportunities and their conversion to actionable products/leads.



Kimuli Siraje

UX/UI Designer

Siraje executes all visual designs from conceptualization to the final handover to engineering. He conceptualizes and designs original ideas that bring simplicity and user friendliness to complex design roadblocks.



Bright Niyonzima.

Software Developer

Bright develops and maintains standard software from inception, through production to deployment for the final client. He also conducts exhaustive tests to certify the worthiness of the final product. Bright's core expertise is web applications.



Robert Andama

Software Developer

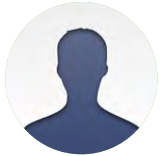
Robert develops and maintains standard software from inception, through production to deployment for the final client. He also conducts exhaustive tests to certify the worthiness of the final product. Robert's core expertise is web, mobile and desktop applications.



Katana Phirdaus

Administrative Assistant

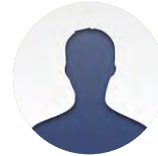
Phirdaus caters to the smooth running of the company and well being of the staff, at an administrative level. She caters to the accountability of the office cash and bank accounts, accounts receivables, receipts and payments.



Barnard Kwatampora

Systems Administration

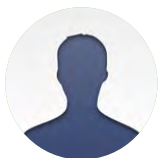
Mike uses his experience in systems and network administration to ensure the final products are delivered to the customers and operate in a manner befitting of the customer's expectations. Put simply, Mike ensures the products run perfectly when deployed for the customers.



Patrick J Okui

Network/Systems Administration

Patrick uses his equally vast experience in systems and network administration to test products, ensure they are delivered to the customers and operate in a manner befitting of the customer's expectations.



Joseph Kimaili

Network/Systems Management

Joseph provides valuable support in the areas of product performance optimization over wide geographical spaces (Wide Area Networks). Joseph's expertise in the area of large network management spans more than 10 years in different institutions such as Makerere University and the Research and Education Network Uganda (RENU).



Our Offices



Plot 1, Apt B3, Bwindi Trust House
Naguru, Kampala, Uganda



info@trailanalytics.com,



www.trailanalytics.com



(256) 392 001576

(256) 772 426242



Trail Analytics Limited © 2017